



Unicoat Surface™

Stunning Effects on ...

Floors/ Wood/ Metal/ Glass/ Granite/ Marble

Unicoat Surface™

Unicoat Surface™ is an epoxy material system consisting of only two components - Part-A and Part-B. When combined and applied over a surface it sets into a hard thermoset polymer layer. The surfaces are strong and durable. It can be applied over cement plaster-concrete, metal, wood, glass, granite, marble and fiberboards.

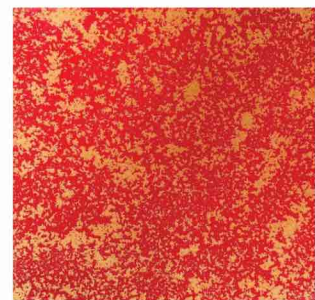
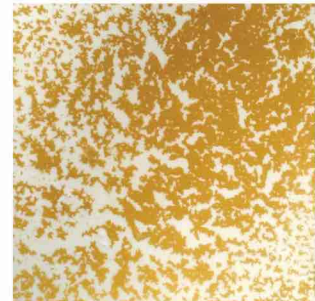
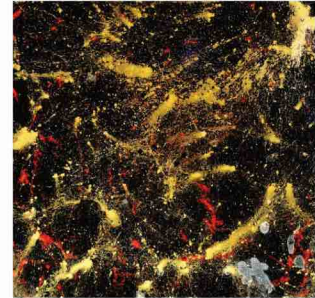
Unicoat product range consists of colored epoCoat™, epoLayer™ and epoScreed™.

epoCoat™

epoCoat™ is a low viscosity thixotropic colored epoxy material. It is used for providing surface protection and coloring to substrates. The cured coatings have good bonding to substrates and exhibit high strength, resistance to surface abrasion, resistance to chemicals and long life.

epoCoat™ is superior to traditional paints and is a hygienic film. It is an excellent coating for the inside of drinking water tanks, metal fabricated products, base and top coats for floorings and wood protection.

Usage is as easy as using a roller brush. Coverage is 10 g/sft for a 100 micron film. Due to built-in thixotropy it can be applied on both horizontal and vertical surfaces. A large range of opaque colors is available (www.keroproducts.com and www.colourtechpigments.com).



epoLayer™

epoLayer™ is a medium viscosity colored epoxy material. It is used for building thick colored epoxy layers on substrates such as cement plaster-concrete floors, wood based sheets, metal sheets, glass and fiberboards.

epoLayer™ exhibits excellent compressive strength (10-25 MPa), flexural strength (85-110 MPa) and tensile strength (35-70 MPa).

epoLayer™ is the foundation material to create stunning visual effects. It is used for creating layers with Sparkle Effects, Nova Effects, Fluorescent Effects and other Esoteric Effects.

The application procedure is easy and a sequence of steps has to be followed. Coverage is 100 g/sft for a 1 mm thick layer. A large range of opaque colors is available (www.keroproducts.com).

epoScreed™

epoScreed™ is a colored epoxy screed material. It is a 2 in 1 product for flooring - it both colors and builds thickness. This is a one-step material for colored floorings and is a great time and cost saver. The coloring and thickness build up is precise and assured. Hands down, this is the fastest and most reliable way to construct colored floors.

epoScreed™ exhibits high compressive strength (20-40 MPa) and flexural strength (95-110 MPa). It is stronger than cement-concrete by 5 to 8 times in both compressive strength and flexural strength. Coverage is 150 g/sft for a 1 mm thick layer. A large range of opaque colors is available (www.keroproducts.com).

Application

Application of epoLayer™ and epoScreed™ is simple.

Surface Preparation: Surfaces must be free from loose debris, oils and grease and water dampness. Loose debris can be brushed off and mechanically removed. Oils and grease can be removed by washing the surface with soap water and rinsed off to remove residual soap. If there is water dampness due to water leakage, then the surface must be made waterproof using our Goodbye Leaks™ waterproofing products. See our brochure on waterproofing.

Material Application: The following simple steps must be followed for achieving excellent quality coatings.



Mix Part-A and Part-B



Evenly pour over Surface



Even out with Squeegee



Square Notched Trowel (10 mm)



Go over with Spiked Roller

Mixing of Part-A and Part-B must be done with a power tool for best homogenization. Care must be taken to avoid air entrapment. The material must be poured over the surface evenly. Further even distribution can be accomplished with a squeegee. Final even distribution must be done with square notched trowel of 10 mm size. The last step consists of using a spiked roller to remove any entrapped fine air bubbles. All these steps must be done within the pot-life time of the product.

The guidelines in the Technical Data Sheet must be followed to plan the application, especially those related to pot-life of the product.

Epocrete™ - Epoxy Waterproof Concrete

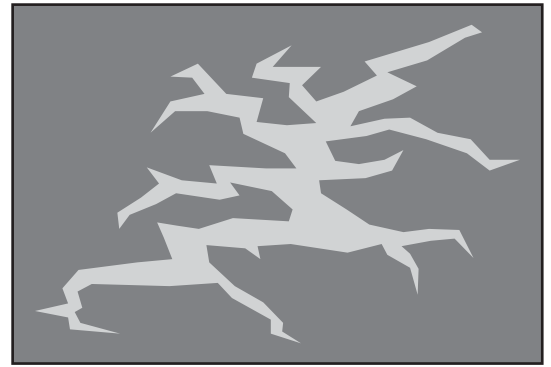
Epocrete™ is an epoxy based concrete.

Water leaks through large gaps in old or poor quality cement concrete and plaster. Patching it with fresh cement concrete is simply not effective, especially if the surface is already moist and damp. Further, cement concrete is porous.

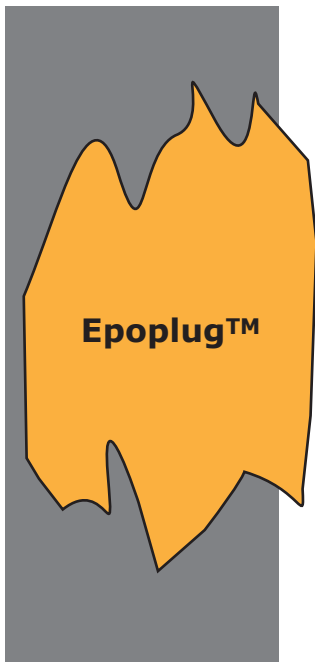
Epocrete™ solves this problem. It cures quickly and bonds well to damp surfaces in the damaged gaps in old or poor cement concrete.

Epocrete™ is a Part-A and Part-B system. It is mixed with a power tool and poured over the large cracks. On horizontal surfaces it self-levels. On vertical surfaces it can be applied in layers with a trowel

It sets to a hard mass in 60 minutes and complete curing takes place in 24 hours.



**Vertical Wall
Trowel
Application**



Epoplug™ - Epoxy Waterproof Plug

Epoplug™ is an epoxy low density plug. It has a density of 0.5 g/cc, compared with about 2.5 g/cc for conventional epoxy plugs. For the same mass it can occupy a volume 5 times larger.

Epoplug™ is a practical product to plug holes in concrete, especially on vertical walls. It is a solid dough like malleable mass, that can be pushed into holes and gaps. It bonds to damp surfaces and can stop flowing water.

Epoplug™ is a Part-A and Part-B system. It is kneaded by hand. It begins setting in 20 minutes and solidifies to a rigid mass in 30 minutes.

 **KEROX**

Technical Support:

M: +91-988-672-6464

M: +91-988-604-8885

E: office@keroxproducts.com

W: www.keroxproducts.com



Manufactured By:

Colourtech Products Private Limited
Plot No. 81D, A Block, Phase I, Road No.8
KIADB Jigani Industrial Area, Jigani Hobli
Bangalore -562 106, Karnataka, INDIA

M: +91-924-344-4556

M: +91-734-970-7340

E: sales@colourtechpigments.com